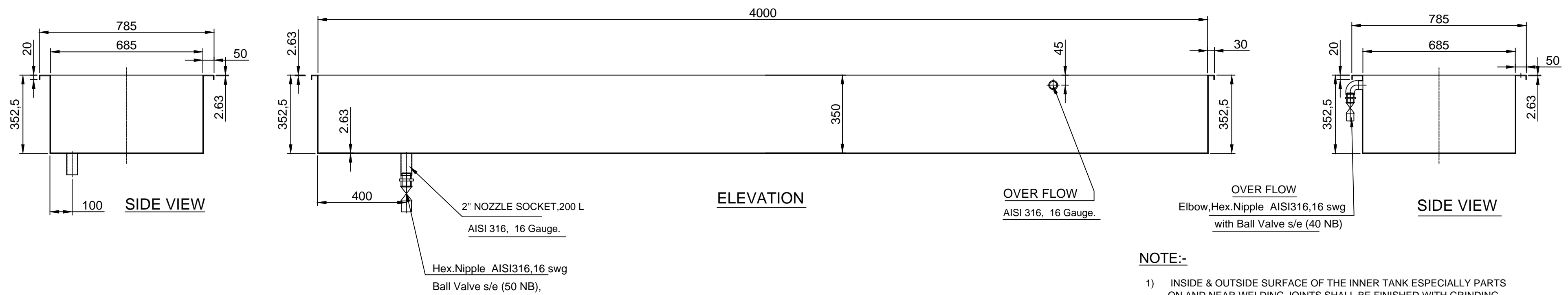
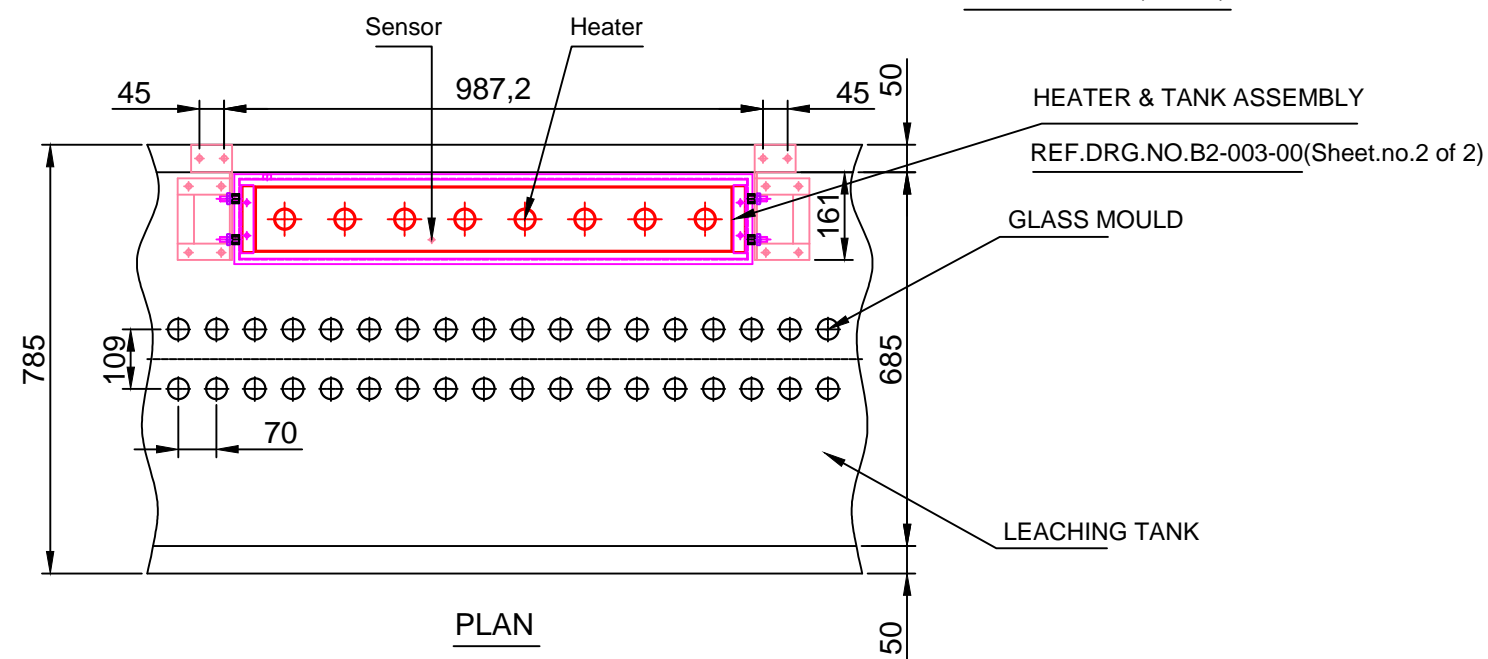


PLAN



ELEVATION

SIDE VIEW



REFERENCE FOR HEATER ASSEMBLY IN LEACHING TANK

NOTE:-

- 1) INSIDE & OUTSIDE SURFACE OF THE INNER TANK ESPECIALLY PARTS ON AND NEAR WELDING JOINTS SHALL BE FINISHED WITH GRINDING MACHINE , BUFFING MACHINE OR EQUIVALENT.
- 2) ALL INSIDE SURFACE SHALL BE BUFFED FOR # 300.
- 3) ALL WELDING TO BE CARRIED IN 'T I G '.
- 4) ALL PIPES ARE AISI 316 ,16 Gauge,Seamless
- 5) MATERIAL TEST CERTIFICATE SHALL BE PRODUCED FOR SS SHEET USED.

REF.DRG.NO. B2-003-00(sheet.no.2 of 2) FOR HEATER ASSEMBLY IN LEACING TANK.

MATERIAL: AISI 316 L (IS 1570-07 Cr19Ni9Mo2Ti28)		HLL Lifecare Limited. Thiruvananthapuram-5	NO:OFF.
DRAWN BY:	Paul.M.P	TITLE:- LEACHING TANK (BUTTERFLY TYPE DOUBLE LINE AUTOMATIC CONDOM DIPPING MACHINE)	
CHECKED BY:			
APPROVED BY:			
DATE:	25-05-2013		
SCALE:			
ALL DIMENSIONS ARE IN M.M			